

virtuoso®

Networking Guide
Virtuoso
SG400/SG800

For a complete printer setup guide, including Network Setup, see the **Using the [Host Interface] Menu** section of the SG400/SG800 Users Guide.

Notice

Before proceeding, please ensure the Sawgrass printer driver and PowerDriver-v4 have been installed. For assistance with driver installation, please refer to the SG400/SG800 Installation Guide.

1. Ensure the network cable is connected to the printer and the printer is powered on.
2. To find your IP address of your printer, press the Menu button (a) located on the control panel of the printer six times until the screen displays "Host Interface" (b) and press Enter (c). See Figure 1.

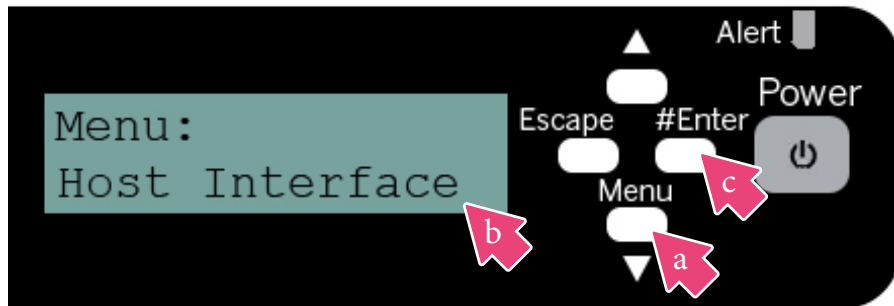


Figure 1

Notice

DHCP must be enabled in your network configuration. Contact your network administrator for details.

3. Press the down button (a) to display Network Setup (b) and press Enter (c). See Figure 2.

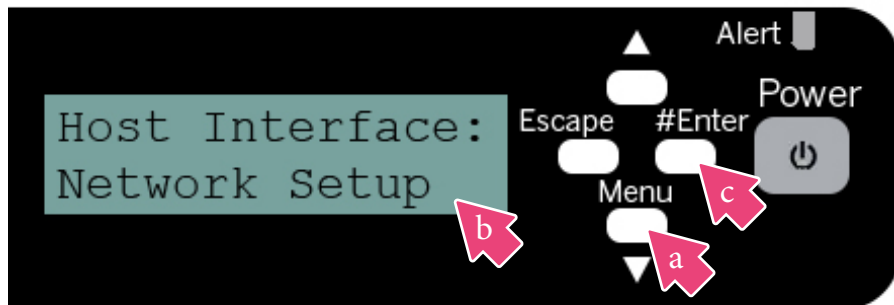


Figure 2

- Press the down button (a) six times to display IP v4 Address (b) and press Enter (c). See Figure 3.



Figure 3

- The number displayed is your IP Address. An example is shown below. Write the number down for later use. After you've noted the IP address, press Escape (b) four times until you return to the "Ready" state. See Figure 4.



Figure 4

 **Notice**

In a DHCP environment, the IP address may change periodically. As a result, this procedure will need to be repeated each time the IP address changes.

6a. **Windows 7:** On your desktop, click the Start icon (a) and select Devices and Printers (b). See Figure 5a.

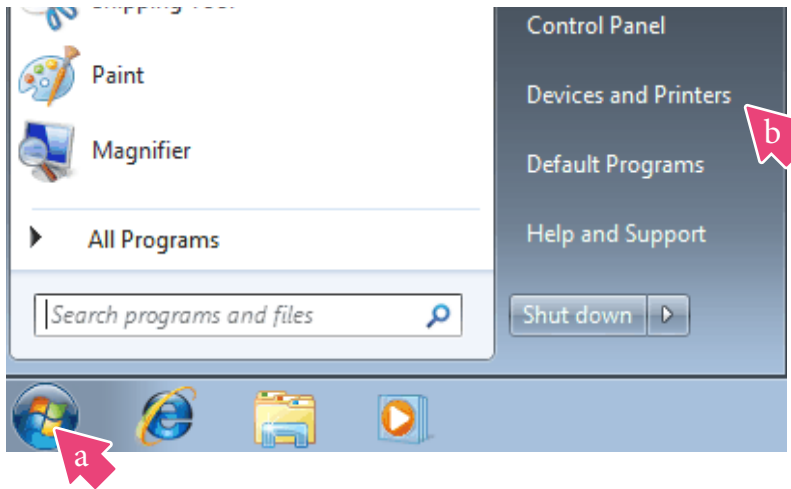


Figure 5a

6b. **Windows 8:** Hold down the Windows logo key on your keyboard then press the letter “x” (a). This will open the screen below. Select Control Panel (b). See Figure 5b. Then select Devices and Printers in the Control Panel window. See Figure 5c.

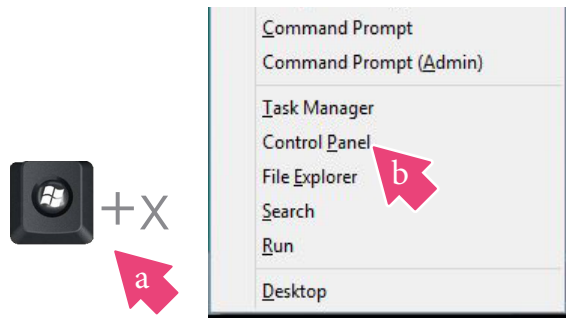


Figure 5b

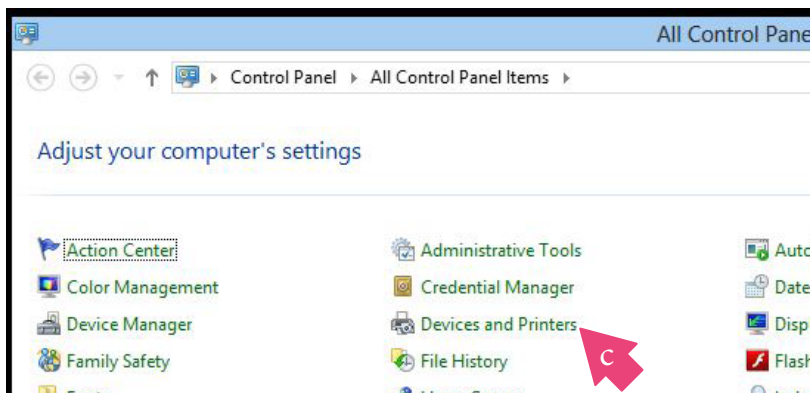


Figure 5c

7. In the Devices and Printers folder, right-click your Sawgrass SG400/SG800 icon (a) and select Printer Properties (b). This will open the Sawgrass SG400/SG800 Properties window. See Figure 6.

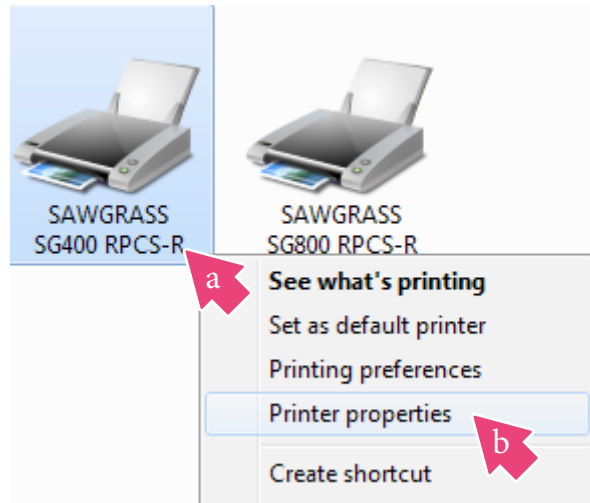


Figure 6

8. In the Properties window, click the Ports tab (a) and click Add Port...(b). See Figure 7.

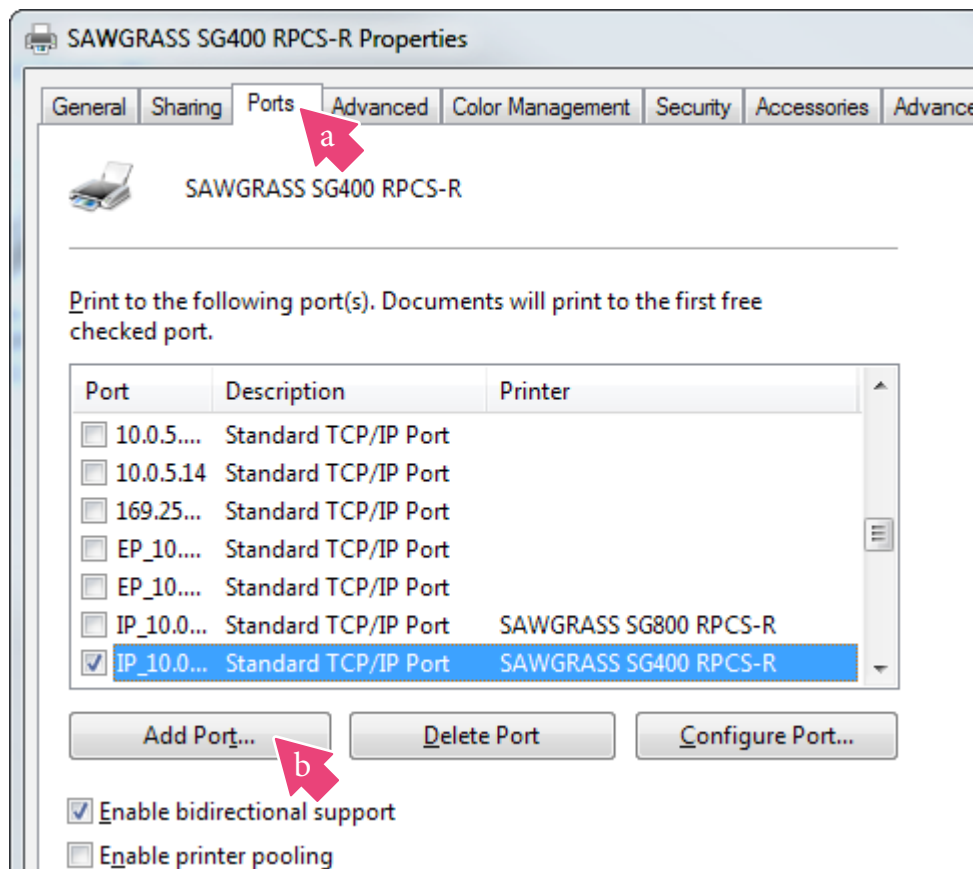


Figure 7

9. In the Printer Ports window, select Standard TCP/IP Port (a) and click New Port...(b). See Figure 8.

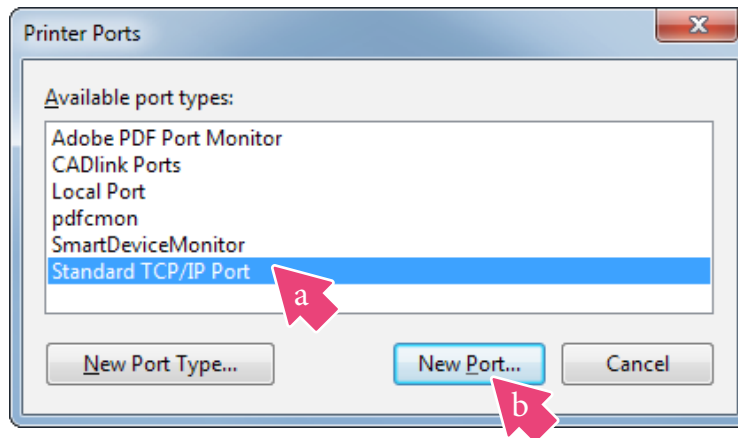


Figure 8



Notice

When printing to multiple printers simultaneously from one computer, you will need to install PowerDriver-v4 and assign a new "Local Port" for each printer.

10. The following window will appear instructing you to power on the printer and ensure the network is connected and configured. Click Next to continue. See Figure 9.

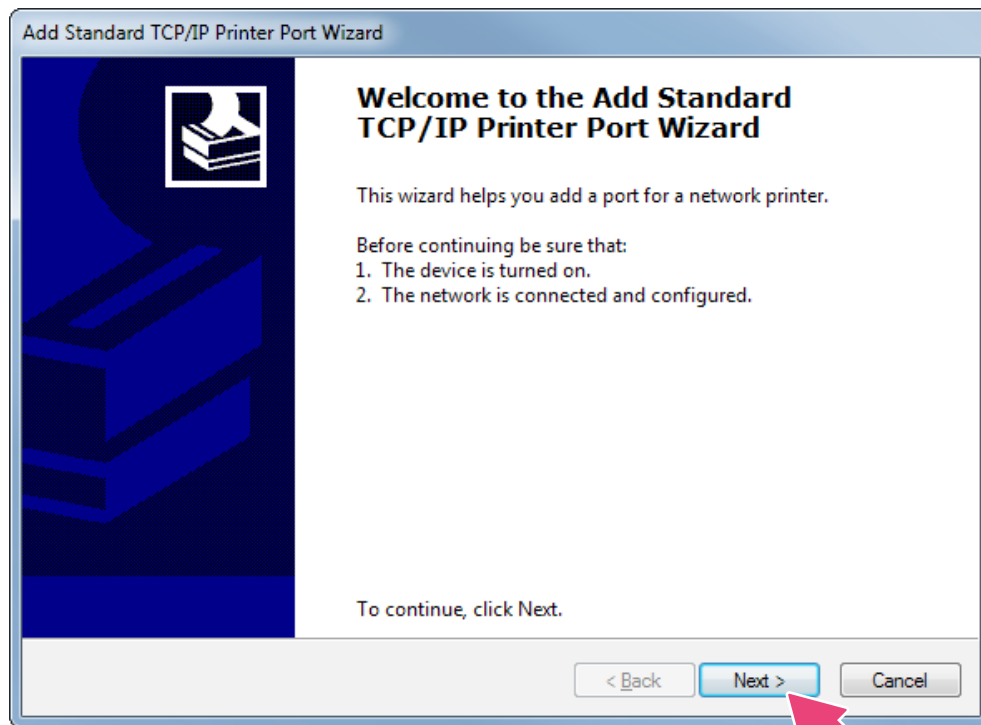


Figure 9

11. In the Printer Name or IP Address field, type in your IP Address from Step 5. In the Port Name field, you can name your port for easy identification when printing. When finished, click Next to continue. Figure 10.

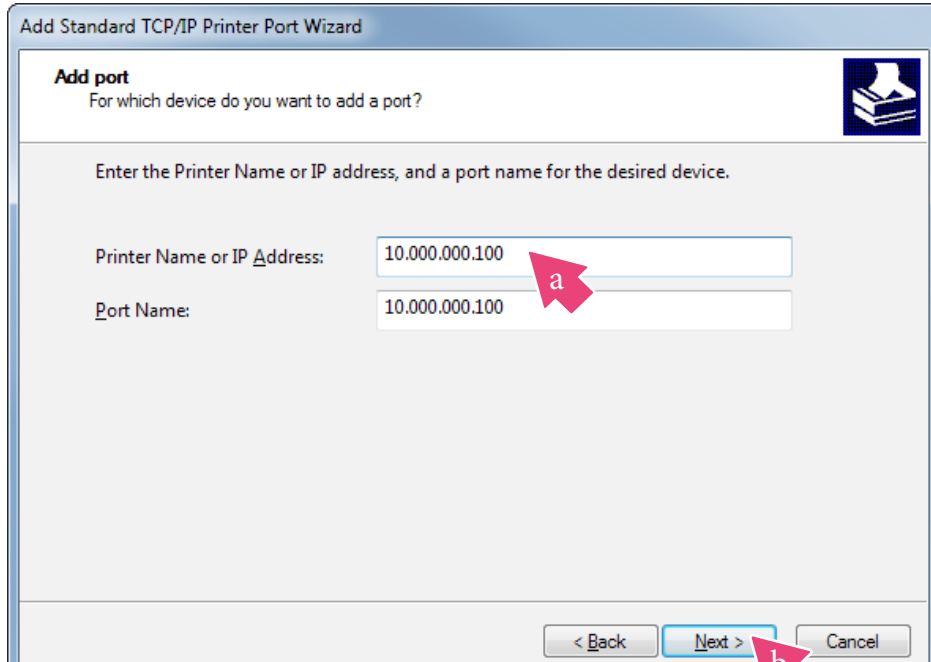


Figure 10

12. Click Finish to complete the setup. See Figure 11.

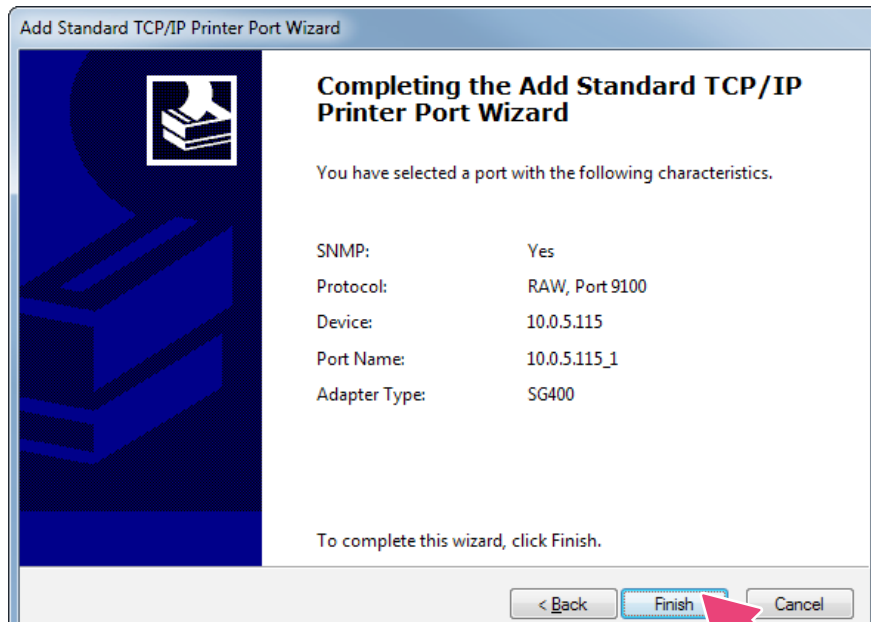


Figure 11

13. Click Close to exit the Printer Ports wizard
14. Click Apply to save your changes and close the Properties Window. See Figure 12.

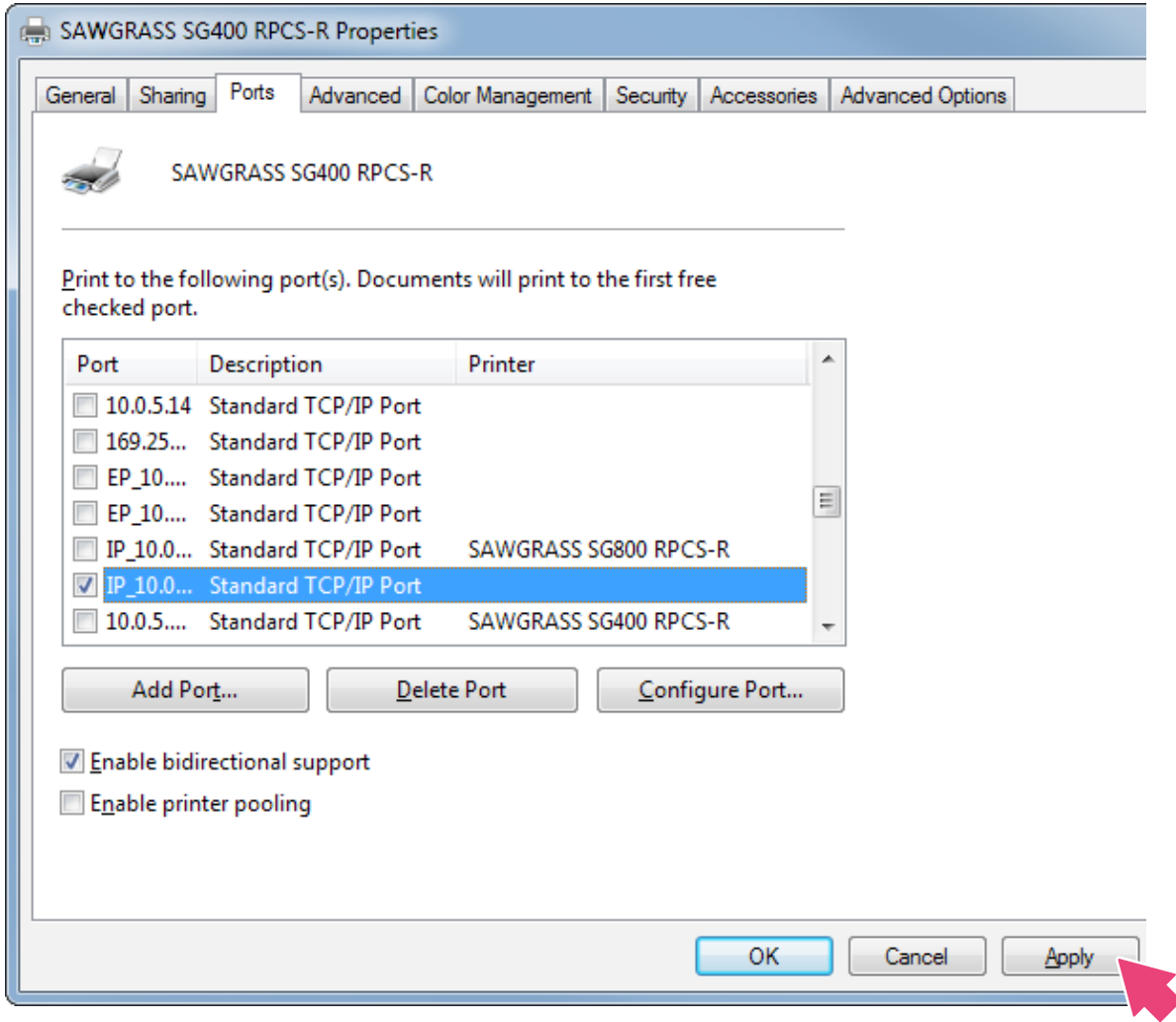


Figure 12

Congratulations! You have successfully configured your Sawgrass printer driver for network printing.

For the latest information and updates on any product, refer to our website:
www.sawgrassink.com

SAWGRASS™

sawgrassink.com

© 2015 Sawgrass Inc. All rights reserved.

The information is based on information available at the time of publication and is subject to change without notice. Accuracy and completeness are not warranted or guaranteed.

The information contained in this document is confidential and provided under license. No part of this document may be reproduced or transmitted in any form or by any means, including electronic medium or machine-readable form, without the expressed written permission of Sawgrass Technologies, Inc.